

# P1157E-500

15" XGA TFT Expandable Industrial Touch Panel Computer with 7th/6th Gen Intel® Core™ i7/i5/i3, Celeron® & Pentium® Processor and PCI/PCIe Slot

## Features

- 15" XGA TFT LCD display
- LGA1151 socket 7th/6th gen Intel® Core™ i7/i5/i3, Celeron® & Pentium® processors
- Intel® H110 chipset
- Less screw design for easy installation
- 4 USB 3.0, 2 USB 2.0 and 4 COM
- One PCIe x4 or one PCIe slot
- Built-in speakers and optional Wi-Fi 802.11 b/g/n module
- Robust IP65 compliant aluminum front bezel
- Supports 5 OSD keys on the front panel



▲ Side view



▲ Back view



## Introduction

The P1157E-500 is a multimedia 15" touch panel PC for kiosk application. It has a fashionable mechanism design and industrial-grade material front bezel which can avoid damage from chemical corrosion. To meet the demands of multimedia application, the P1157E-500 is powered by a high performance LGA1151 socket 7th/6th generation Intel® Core™ processor with the Intel® H110 chipset. It features four COM ports, two Gigabit Ethernet and up to 32GB memory of dual-channel DDR4-2133 that delivers high computing capability for high performance-demanding applications. The industrial touch panel PC is most suitable for kiosk, factory and automation.

### Expandable for 1 PCIe or 1 PCI

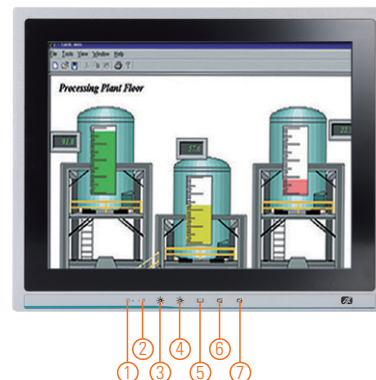
The P1157E-500 has one PCIe x4 or PCI slot for expansion purpose. User can easily plug in standard half-size PCI or PCIe card based on any application needs.

### Speaker and WLAN Antenna Supported

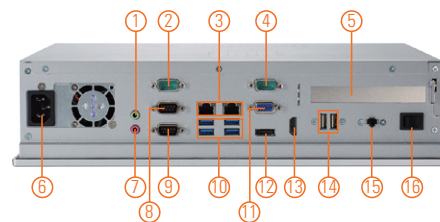
The P1157E-500 features built-in speakers for kiosk application to display multimedia content program. It also supports WLAN module antenna (optional) for wireless network connectivity.

### Friendly Less Screw Design

The P1157E-500 is designed with easy of maintenance in mind. There are only four screws on the back chassis, so that technicians can quickly remove the system's back cover with minimum effort.



1. Display status LED
2. SATA status LED
3. Brightness -
4. Brightness +
5. Display monitor ON/OFF
6. Volume -
7. Volume +



1. 1 x Line-out
2. 1 x RS-232
3. 2 x LAN
4. 1 x RS-232
5. PCI or PCIe x4 expansion slot
6. AC plug
7. 1 x Mic-in
8. 1 x RS-232/422/485
9. 1 x RS-232
10. 4 x USB 3.0
11. 1 x VGA
12. 1 x DisplayPort
13. 1 x HDMI
14. 2 x USB 2.0
15. Remote power switch
16. Switch for power on/off

## Specifications

|             |   |  |
|-------------|---|--|
| Front Bezel | Aluminum w/ IP65/NEMA 4 rugged protection |  |
| LCD Panel   | Display Type                              | 15" XGA TFT LCD  |
|             | Brightness                                | 250 nits   |
|             | Resolution                                | 1024 x 768 pixels  |
|             | Viewing Angle                             | 160°/140°  |
| Main System | CPU                                       | LGA1151 socket 7th/6th gen Intel® Core™ i7/i5/i3, Celeron® & Pentium® processor            |
|             | Chipset                                   | Intel® H110  |
|             | System Memory                             | 2 x 288-pin DDR4-2133 Long-DIMM, up to 32GB  |
|             | BIOS                                      | AMI UEFI BIOS  |
|             | Storage                                   | 1 x 3.5" or 1 x 2.5" SATA HDD (9.5 mm height)/2 x 2.5" SATA HDD (9.5 mm height) (optional) |
|             | Drive                                     | N/A  |
|             | Watchdog Timer                            | 255 levels, 1 to 255 sec.  |

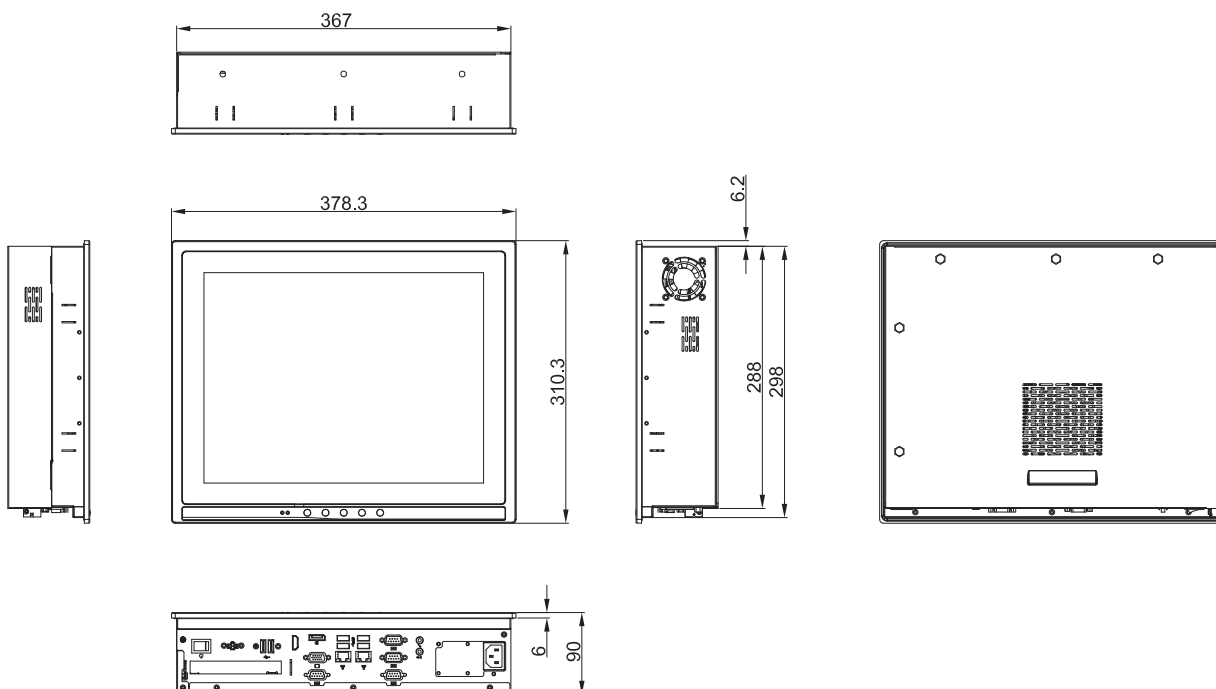
## Specifications

|                       |  |
|-----------------------|--|
| IO Connector          | 3 x RS-232<br>1 x RS-232/422/485<br>1 x HDMI<br>1 x VGA<br>1 x DisplayPort<br>4 x USB 3.0<br>2 x USB 2.0<br>2 x 10/100/1000 Mbps Ethernet (Intel® i219-LM/i211-AT)<br>1 x Audio (Mic-in & Line-out)<br>1 x Remote power switch |
| TPM                   | N/A  |
| Expansion Interface   | 1 x PCIe x4 or 1 x PCI   |
| Touchscreen           | 5-wire resistive type<br>Light transmission 79%<br>1 million activations (typical) at a single point   |
| Power Supply          | 100 to 240 VAC, 200W   |
| Power Consumption     | 97.6W  |
| Dimensions            | 378.3 mm (14.89") (W) x 90 mm (3.54") (D) x 310.3 mm (12.22") (H)  |
| Packing Dimensions    | 510 mm (20.08") (W) x 186 mm (7.32") (D) x 532 mm (20.94") (H)   |
| Weight (net/gross)    | 5.4 kg (11.90 lb)/7.8 kg (17.20 lb)  |
| Operating temperature | 0°C to +50°C (+32°F to +122°F)   |
| Relative humidity     | 10% to 90% @ +40°C, non-considering  |
| Operating vibration   | 1.0G, 5 - 500 Hz, random   |
| Certifications        | CE   |

## Packing list

1 x P1157E-500  
1 x Driver CD  
1 x Panel mount kit  
1 x US power cord

## Dimensions



## Ordering Information

|                      |  |
|----------------------|--|
| P1157E-500 with PCIe | 15" XGA expandable industrial touch panel computer with LGA1151 socket 7th/6th gen Intel® Core™ i7/i5/i3, Pentium® & Celeron® processor, resistive touch screen, PCIe x4 slot and 100 to 240 VAC |
| P1157E-500 with PCI  | 15" XGA expandable industrial touch panel computer with LGA1151 socket 7th/6th gen Intel® Core™ i7/i5/i3, Pentium® & Celeron® processor, resistive touch screen, PCI slot and 100 to 240 VAC     |

\*Specifications and certifications may vary based on different requirements.

## Optional Accessories

|              |                                      |
|--------------|--------------------------------------|
| Wi-Fi kit    |                                      |
| 82211570380E | P1157E-500 2.5" slim HDD kit         |
| 82211570410E | P1157E-500 rack mount kit            |
| 82211570420E | P1157E-500 VESA & wall mount bracket |
| E981604011   | ATC10 (VESA arm clamp type)          |
| E981604012   | ATW10 (VESA arm wall mount)          |
| E226171119   | PPC S1702B black stand (S)           |
| 59403200B00E | Remote power switch cable (100 cm)   |
| 82211570410E | P1157E-500 rack mount                |

## Optional EOS Installation

Windows® 7  
Windows® 8.1  
Windows® 10 IoT Enterprise

## Optional OS Installation

Skylake: Windows® 7  
Windows® 8.1  
Windows® 10  
Kaby Lake: Windows® 10