

P61210 NEW

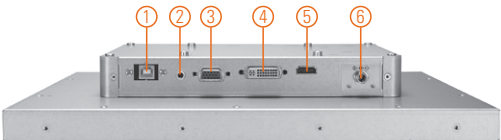
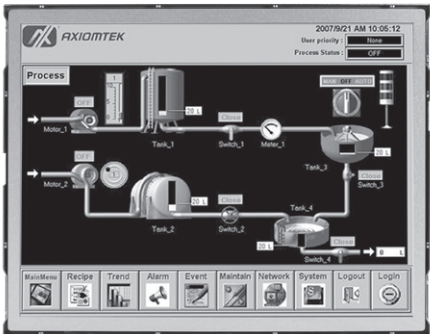
12.1" XGA TFT Industrial Open Frame Monitor

Features

- 12.1" XGA TFT LED backlight LCD
- Supports open frame mount, wall mount and VESA arm
- Resistive touchscreen
- Full range screw-type (locked) AC-in or 24V DC-in (option)
- HDMI, DIV-D and VGA with multi-signal inputs



▲ Side view



1. T/S port

2. Line-in

3. VGA

4. DVI-D
5. HDMI

6. Power

Introduction

The P61210 is an ultra slim industrial open frame monitor, which adopts 12.1-inch 500 nits XGA LED backlight LCD display and supports multi-signal interfaces including DVI, VGA and HDMI. 24V DC-in means it is fit for all kinds of industrial environments. Moreover, the P61210 supports open frame, wall mount or VESA FPMPI mounting. With the compact mechanism design, users can enjoy free from space constraint. It is especially suitable for POI/POS, excellent HMI and all kinds of heavy-duty industrial fields.

Specifications

Front Bezel	Open frame monitor
Mounting	Open frame mount, wall mount and VESA arm
LCD Panel	Display12.1" XGA TFT LCD
	Max. Resolution1024 x 768
	Max. Colors16.2 M
	Active Area (mm)245.76 x 184.32
	Pixel Pitch (mm)0.24 x 0.24
	Response Time16ms
	BacklightLED backlight
	Backlight MTBF30,000 hrs
	Viewing Angle (H/V)160°/140°
	Contrast Ratio700 (TYP.)
	Brightness (cd/m ²)500 nits
Display Control	OSD (on screen display)
Display Mode	VGA 640 x 350 (70Hz), VGA 640 x 480 (60/72/75Hz), VGA 720 x 400 (70Hz), SVGA 800 x 600 (60/72/75Hz), XGA 1024 x 768 (60/72/75Hz)

Specifications

Input Signal	DVI-D VGA HDMI Touchscreen: Serial RS-232 or USB interface
I/O Connectors	1 x RS-232 or USB for touchscreen version 1 x DVI-D 1 x VGA 1 x HDMI 1 x Screw-type DC power input
Power Adapter	Screw-type external AC / DC power adapter
Power Consumption	15 W
Touchscreen	Thickness Resistive: 3.2 mm Light Transmission Resistive: 80% Power Consumption Resistive: +5V @ 100mA Touch Life Resistive: 35 million touches Controller interface: RS-232 D-type 9-pin male connector or USB
Dimensions	270.5 mm (10.56") (W) x 52.9 mm (2.08") (H) x 218.3 mm (8.59") (D)
Packing Dimensions	490 mm (19.29") (W) x 166 mm (6.54") (19.29") (H) x 502 mm (19.76") (D)
Weight (net/gross)	TBD
Environment	Operating temperature: 0°C ~ +55°C (+32°F ~ +131°F) Relative humidity: 20% ~ 90% @ +40°C, non-condensing
Packing List	1 x VGA cable 1 x RS-232 or USB cable for touchscreen (for touch version) 1 x Audio cable 1 x EU/US power cord (for AC version)
Certificate	CE

Ordering Information

AC Power	Resistive (RS-232)	P61210R-AC-RS-US-EU
	Resistive (USB)	P61210R-AC-U-US-EU
	Non-touch	P61210N-AC-US-EU
12V/24VDC Power	Resistive (RS-232)	P61210R-24VDC-RS
	Resistive (USB)	P61210R-24VDC-U
	Non-touch	P61210N-24VDC

Optional Accessories

5946L203800E	HDMI cable
59461713400E	DVI cable
82231770050E	Wall mount kit
E226171106	Desktop stand

Dimensions

