

# P61710 NEW

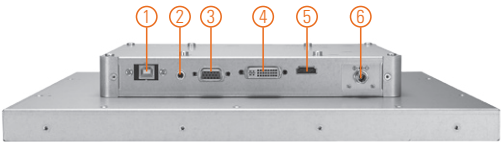
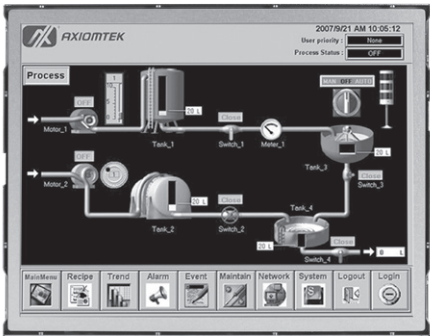
17" SXGA TFT Industrial Open Frame Monitor

## Features

- 17" SXGA TFT LED backlight LCD
- Supports open frame mount, wall mount and VESA arm
- Resistive touchscreen
- Full range screw-type (locked) AC-in or 12V/24V DC-in (option)
- DVI-D, DisplayPort and HDMI with multi-signal inputs



▲ Side view



- 1. T/S port
- 2. Line-in
- 3. VGA
- 4. DVI-D
- 5. HDMI
- 6. Power

## Introduction

The P61710 is an ultra slim industrial open frame monitor, which adopts 17-inch 350 nits SXGA LED backlight LCD display and supports multi-signal interfaces including DVI, VGA and HDMI. 12/24V DC-in means it is fit for all kinds of industrial environments. Moreover, the P61710 supports open frame mount, wall mount or VESA FPMPI mounting. With the compact mechanism design, users can enjoy free from space constraint. It is especially suitable for POI/POS, excellent HMI and all kinds of heavy-duty industrial fields.

## Specifications

Front Bezel	Open frame monitor
Mounting	Open frame mount, wall mount and VESA arm
LCD Panel	Display 17" SXGA TFT LCD
	Max. Resolution 1280 x 1024
	Max. Colors 16.2 M
	Active Area (mm) 337.92 x 270.33
	Pixel Pitch (mm) 0.264 x 0.264
	Response Time 5ms
	Backlight LED backlight
	Backlight MTBF 30,000 hrs
	Viewing Angle (H/V) 170°/160°
	Contrast Ratio 1000 (TYP.)
	Brightness (cd/m <sup>2</sup> ) 250 nits
Display Control	OSD (on screen display)
Display Mode	VGA 640 x 350 (70Hz), VGA 640 x 480 (60/72/75Hz), VGA 720 x 400 (70Hz), SVGA 800 x 600 (60/72/75Hz), XGA 1024 x 768 (60/72/75Hz), SXGA 1280 x 1024 (60/72/75Hz)

## Specifications

Input Signal	DVI-D VGA HDMI Touchscreen: Serial RS-232 or USB interface
I/O Connectors	1 x RS-232 or USB for touchscreen version 1 x DVI-D 1 x VGA 1 x HDMI 1 x Screw-type DC power input
Power Adapter	Screw-type external AC/DC power adapter
Touchscreen	Thickness Resistive: 3.2 mm Light Transmission Resistive: 80% Power Consumption Resistive: +5V @ 100mA Touch Life Resistive: 35 million touches Controller interface: RS-232 D-type 9-pin male connector or USB
Dimensions	372 mm (14.65") (W) x 55.95 mm (2.20") (D) x 304 mm (11.97") (H)
Packing Dimensions	510 mm (20.08") (W) x 186 mm (7.32") (D) x 532 mm (20.94") (H)
Weight (net/gross)	TBD
Environment	Operating temperature: 0°C ~ +45°C (+32° ~ +122°F) Relative humidity: 20% ~ 90% @ +40°C, non-condensing
Certificate	CE

## Ordering Information

AC Power	Resistive (RS-232)	P61710R-AC-RS-US-EU
	Resistive (USB)	P61710R-AC-U-US-EU
	Non-touch	P61710N-AC-US-EU
12V/24VDC Power	Resistive (RS-232)	P61710R-DC-RS
	Resistive (USB)	P61710R-DC-U
	Non-touch	P61710N-DC

## Optional Accessories

5946L203800E	HDMI cable
5946L1713400E	DVI cable
82231770050E	Wall mount kit
E226171106	Desktop stand

## Dimensions

