

GOT115-319 NEW

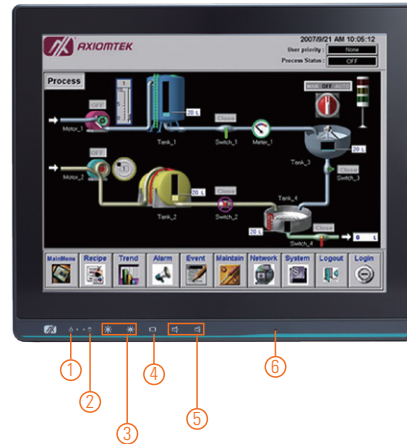
15" XGA TFT Fanless Touch Panel Computer with Intel® Celeron® Processor N3350 or Intel® Pentium® Processor N4200

Features

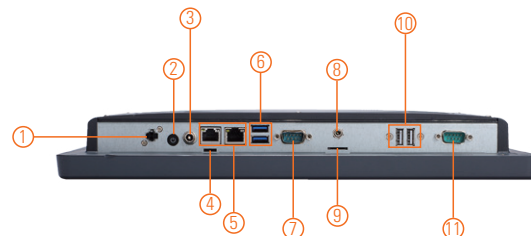
- 15" XGA TFT LCD display with LED backlight
- Fanless design with Intel® Celeron® processor N3350 or Intel® Pentium® processor N4200
- 2 GbE LAN, 4 USB and 2 COM
- IP65-rated plastic front bezel
- Supports RFID and wireless module (optional)
- External AT/ATX mode selection switch
- Easy access storage & RAM design
- Supports panel mount, wall mount, VESA arm and desktop stand
- RS-232/422/485 with RI/5V/12V selectable by BIOS
- Programmable OSD function key



▲ Rear view



1. Power LED
2. HDD LED
3. Brightness adjust +/-
4. Display on/off
5. Volume +/-
6. Microphone



1. Remote power switch
2. Power button
3. Screw connector for adapter
4. AT/ATX switch
5. 2 x LAN
6. 2 x USB 3.0
7. 1 x RS-232/422/485
8. Line-out
9. Micro SD card slot
10. 2 x USB 2.0
11. 1 x RS-232

Introduction

The GOT115-319 is a 15" XGA fanless touch panel computer. In response to market demand, this panel computer is a cost effective solution. It adapts a modern, super sleek and fanless design and is equipped with Intel® Celeron® processor N3350 or Intel® Pentium® processor N4200. For wireless network connection, the GOT115-319 offers one PCI Express Mini Card slot and one M.2 Key E for wireless module. By just plugging in the WLAN card, customers can have instant access to wireless environment.

Super Slim Design

With a thickness of 50 mm, the GOT115-319 is a super slim touch panel computer for space-limited environment.

Support Front Membrane Keys

The GOT115-319 has 5 membrane keys on the front panel which allows users to adjust the LCD on/off, LCD brightness and volume setting easily

Aluminum Back Chassis with Excellent Thermal Solution

With Axiomtek's patent for plastic plus aluminum mechanism design, the GOT115-319 can dissipate the heat easily and keep the system operation stable.

Specifications

Front Bezel	IP65, NEMA 4 rugged protection, plastic front bezel												
LCD Panel	<table> <tr><td>Display Type</td><td>15" XGA TFT LCD with LED backlight</td></tr> <tr><td>Brightness (cd/m²)</td><td>300 nits (XGA)</td></tr> <tr><td>Resolution</td><td>1024 x 768</td></tr> <tr><td>Viewing Angel (H/V)</td><td>160°/160°</td></tr> </table>	Display Type	15" XGA TFT LCD with LED backlight	Brightness (cd/m ²)	300 nits (XGA)	Resolution	1024 x 768	Viewing Angel (H/V)	160°/160°				
Display Type	15" XGA TFT LCD with LED backlight												
Brightness (cd/m ²)	300 nits (XGA)												
Resolution	1024 x 768												
Viewing Angel (H/V)	160°/160°												
Main System	<table> <tr> <td>CPU</td><td>Intel® Celeron® processor N3350 2 cores (up to 2.4 GHz) Intel® Pentium® processor N4200 4 cores (up to 2.5 GHz)</td></tr> <tr> <td>System Memory</td><td>1 x 204-pin DDR3L-1600 SO-DIMM, up to 8GB</td></tr> <tr> <td>BIOS</td><td>AMI UEFI BIOS</td></tr> <tr> <td>Storage</td><td>1 x 2.5" SATA HDD (9.5 mm height) 1 x mSATA 1 x MicroSD card</td></tr> <tr> <td>Watchdog Timer</td><td>255 levels, 0 to 255 sec.</td></tr> <tr> <td>Onboard Graphics</td><td>Integrated in Intel® GFX</td></tr> </table>	CPU	Intel® Celeron® processor N3350 2 cores (up to 2.4 GHz) Intel® Pentium® processor N4200 4 cores (up to 2.5 GHz)	System Memory	1 x 204-pin DDR3L-1600 SO-DIMM, up to 8GB	BIOS	AMI UEFI BIOS	Storage	1 x 2.5" SATA HDD (9.5 mm height) 1 x mSATA 1 x MicroSD card	Watchdog Timer	255 levels, 0 to 255 sec.	Onboard Graphics	Integrated in Intel® GFX
CPU	Intel® Celeron® processor N3350 2 cores (up to 2.4 GHz) Intel® Pentium® processor N4200 4 cores (up to 2.5 GHz)												
System Memory	1 x 204-pin DDR3L-1600 SO-DIMM, up to 8GB												
BIOS	AMI UEFI BIOS												
Storage	1 x 2.5" SATA HDD (9.5 mm height) 1 x mSATA 1 x MicroSD card												
Watchdog Timer	255 levels, 0 to 255 sec.												
Onboard Graphics	Integrated in Intel® GFX												

I/O Connector	1 x RS-232/422/485 (default RS-232) 1 x RS-232 2 x 10/100/1000 Mbps Ethernet 2 x USB 3.0 2 x USB 2.0 1 x Screw type connector for power 1 x Power button (ATX) 1 x Remote power switch 1 x Audio (Line-out) 1 x ATX/AT selectable switch
Expansion Interface	1 x M.2 Key E for wireless module 1 x Full-size PCI Express Mini Card slot
Touchscreen	Projected capacitive multi-touch 5-wire flat resistive touch
Power Supply	DC version: 9 to 24 VDC with adapter cable
Power Consumption	28.8W
Dimensions	329.69 mm (13") (W) x 50 mm (2") (D) x 306 mm (12") (H)
Packing Dimensions	510 mm (20.1") (W) x 190 mm (7.5") (D) x 540 mm (21.2") (H)
Weight (net/gross)	3.2 kg (7.1 lb)/4.8 kg (10.6 lb)
Operating Temperature	0°C to +50°C (+32°F to +122°F)
Relative Humidity	10% - 90% @ +40°C; non-condensing
Operation Vibration	2G, 5 - 500Hz, random for SSD
Certifications	CE

Standard	
GOT115-319-R DC	15" XGA fanless touch panel computer with Intel® Celeron® processor N3350 onboard, 5 wire resistive touch screen, EMI Class B, screw type connector with DC cable and logo
GOT115-319-PCT N4200 DC	15" XGA fanless touch panel computer with Intel® Pentium® processor N4200 onboard, projected capacitive multi-touch, EMI Class B, screw type connector with DC cable and logo

Wi-Fi + Bluetooth kit
Panel mount kit
Wall mount kit
Stand kit
RFID kit
Adapter
* Specifications and certifications may vary based on different requirements.

Windows® 10



Technical drawing of the 15.5 inch LCD monitor showing front, side, and rear views with dimensions.

Front View Dimensions:

- Width: 367
- Height: 306
- Bottom bezel thickness: 32
- Overall bottom thickness: 50

Side View Dimensions:

- Thickness: 50

Rear View Dimensions:

- Width: 333
- Height: 88
- Mounting hole spacing (horizontal): 100, 100
- Mounting hole spacing (vertical): 100, 100
- Central cutout dimensions: 100 (width), 100 (height)
- Central cutout label: 1/4 Max Deep 8mm
- Overall width (including mounting tabs): (333.7)
- Overall height (including mounting tabs): (230)

Bottom View Dimensions:

- Width: 336
- Height: 232

Panel Mount Bezel Cut Out Dim.

BEZEL thickness <5.0 mm